



Bryan Bishop
and partners

Queen Hoo Lane
Tewin, AL6 0LT



Queen Hoo Lane

Tewin, AL6 0LT

Occupying a secluded and peaceful location is this spectacular family home in Queen Hoo Lane considered to be the most exclusive residential address in the Tewin area.

Hunters Moon is approached by a well maintained private drive shared by just 2 other substantial properties, it has its own brick paved driveway which provides parking for several cars and access to an integral double garage. The main entrance is covered by a an impressive portico with wide front door leading into a travertine tiled reception hall with bespoke cloakroom off.

A wide archway opens into the main living area, this is an exceptional open space which has been creatively designed to provide kitchen, dining and living areas in an open plan format, it takes full advantage of its southerly aspect with quadruple aspect windows, bifold doors and roof lanterns allowing maximum light to enter.

The kitchen has a stylish range of fitted units with polished granite tops and range of integrated appliances which include Britannia range cooker, dishwasher and fridge freezer, there is a separate preparation unit with granite top and cupboards under. The ceiling has low voltage down lighters and an integrated speaker system and an attractive limestone floor has been laid to the kitchen, dining and sitting areas. Part of this room has a more formal living area with bespoke wooden floor and natural stone fireplace with fitted wood burning stove. The dining and sitting area overlooks beautiful gardens and fields beyond through 2 sets of full height folding glass doors and leads onto a decked entertains terrace running along the back of the house. Also on the ground floor is a utility room, separate sitting room accessed off the main hall, a small study and a large gym room which could also be used as a great family/playroom.

A staircase with glass balustrade leads up to a galleried landing and four bedrooms. A beautiful master bedroom suite with fitted range of bedroom furniture and luxurious en suite bathroom, a guest suite with fitted wardrobes and en suite shower and 2 further bedrooms and a family bathroom. The house sits in mature gardens of just under one acre and face south west to the rear, there is a large main lawn which extends full length, various seating areas in shade and sun, a feature watercourse has been created which divides part of the garden, a summerhouse and Childrens playhouse. All boundaries are well fenced and the gardens back onto open fields over which the house enjoys far reaching views. The front garden is principally reserved for parking around which are stocked borders, an area of lawn and a wide variety of trees and shrubs to the perimeter. There is an integral double garage and gated access to the rear on either side.

All in all it is a wonderful home in an equally wonderful setting which we invite you to view to fully appreciate its unique qualities.







GROUND FLOOR

Entrance Hallway

Open Plan Living

Sitting Room

Kitchen/Breakfast

Dining Area

Sitting Area

Utility

Games Room

Cloakroom

PRIMARY FIRST FLOOR

Landing

Master Bedroom

En-suite

Bedroom Two

En-suite

Bedroom Three

Bedroom Four

Family Bathroom

SECONDARY FIRST FLOOR

Study

Large Bedroom/Gym/Annexe

Exterior

Integral Double Garage

Driveway

Front Garden

Rear Garden



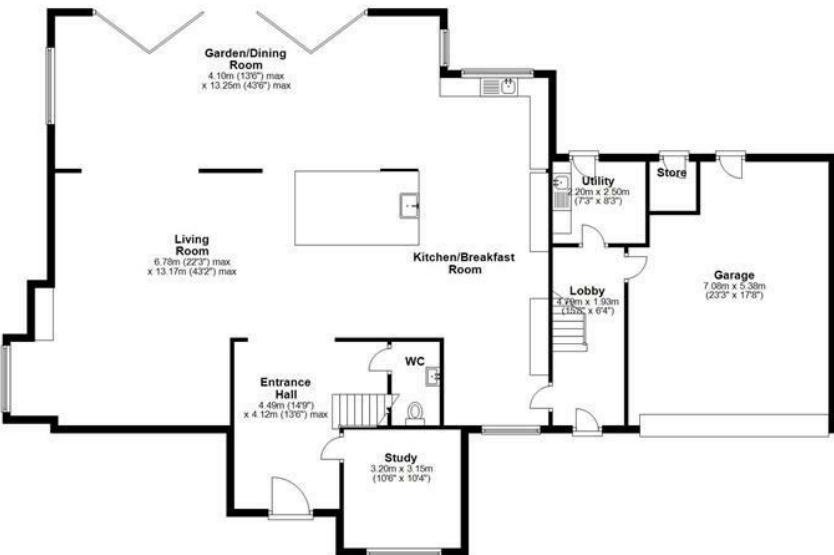




Basement
Approx. 251.9 sq. metres (2711.2 sq. feet)



Summer House
4.70m x 2.33m
(15'5" x 7'8")



First Floor
Approx. 166.6 sq. metres (1795.7 sq. feet)

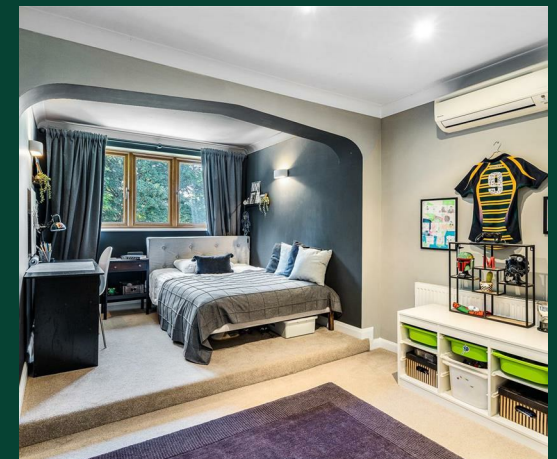


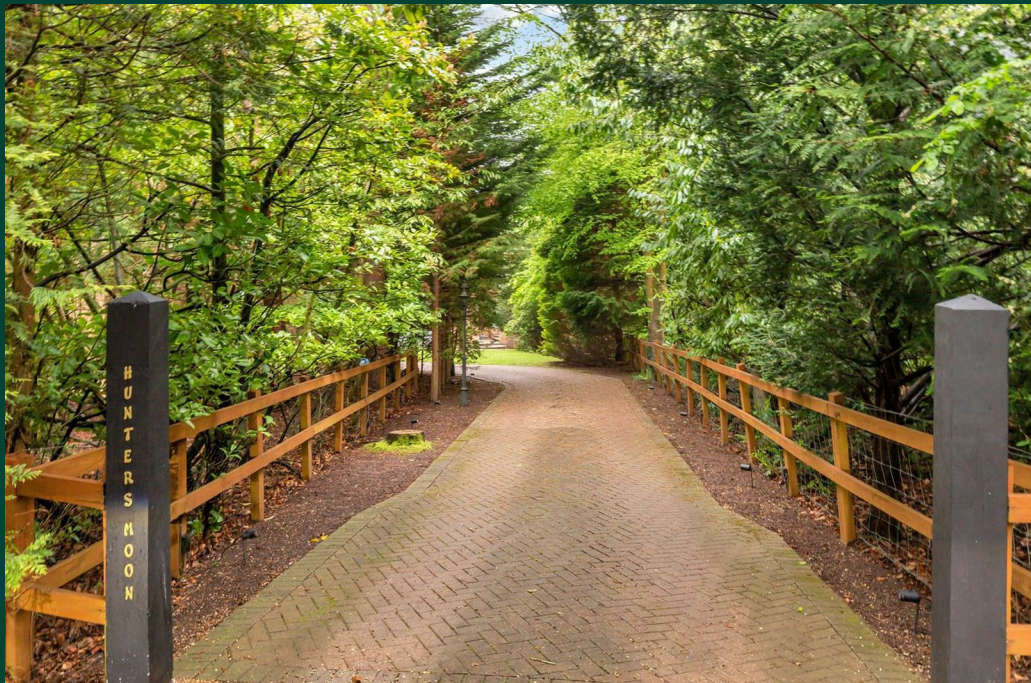
Total area: approx. 418.7 sq. metres (4506.9 sq. feet)

Energy Efficiency Rating

	Current	Potential
Very energy efficient - lower running costs		
(92 plus) A		
(81-91) B		
(69-80) C		
(55-68) D		
(39-54) E		
(21-38) F		
(1-20) G		
Not energy efficient - higher running costs		









Bryan Bishop
and partners

6a High Street | Welwyn | AL6 9EG | 01438 718877 | info@bryanbishop.co.uk | www.bryanbishop.co.uk Find us on

